

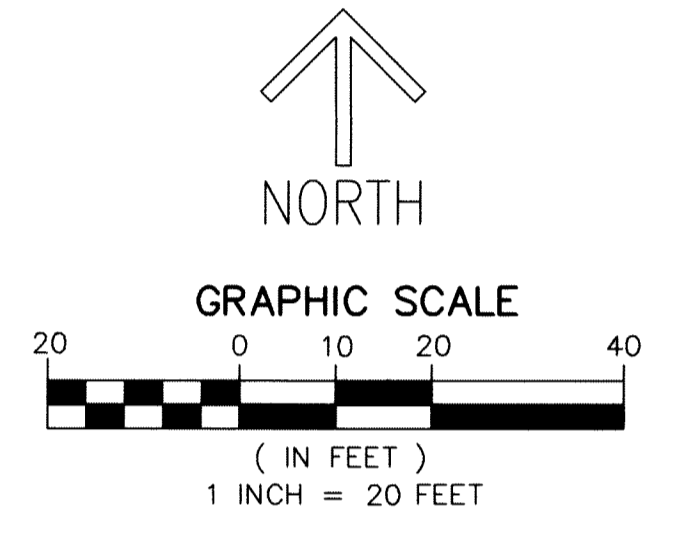
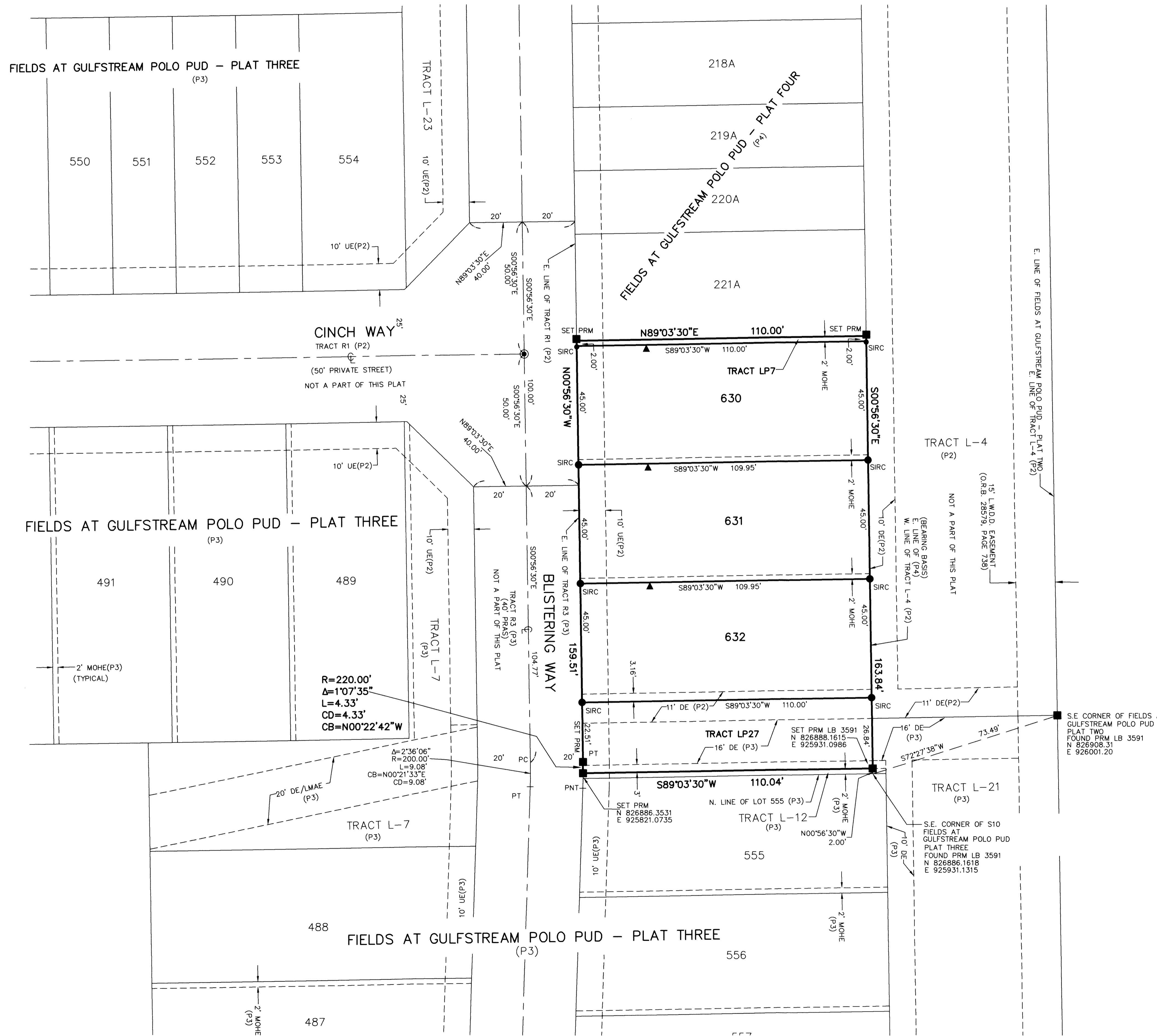
THIS INSTRUMENT PREPARED BY
 DAVID P. LINDLEY
 OF
CAULFIELD and WHEELER, INC.
 SURVEYORS - ENGINEERS - PLANNERS
 7900 GLADES ROAD, SUITE 100
 BOCA RATON, FLORIDA 33434 - (561)392-1991
 CERTIFICATE OF AUTHORIZATION NO. LB3591

FIELDS AT GULFSTREAM POLO PUD - PLAT SEVEN

A PLANNED UNIT DEVELOPMENT
 BEING A REPLAT OF TRACT S10A, FIELDS AT GULFSTREAM POLO PUD - PLAT FOUR,
 AS RECORDED IN PLAT BOOK 128, PAGES 154 THROUGH 162 OF THE PUBLIC RECORDS OF PALM BEACH COUNTY, FLORIDA,
 LYING IN SECTION 29, TOWNSHIP 44 SOUTH, RANGE 42 EAST, PALM BEACH COUNTY, FLORIDA

38

SHEET 2 OF 2



NOTES
COORDINATES, BEARINGS AND DISTANCES
 COORDINATES SHOWN ARE GRID
 DATUM = NAD 83 (90 ADJUSTMENT)
 ZONE = FLORIDA EAST
 LINEAR UNIT = US SURVEY FEET
 COORDINATE SYSTEM 1983 STATE PLANE
 TRANSVERSE MERCATOR PROJECTION
 ALL DISTANCES ARE GROUND, UNLESS OTHERWISE NOTED
 SCALE FACTOR = 1.0000236
 GROUND DISTANCE X SCALE FACTOR = GRID DISTANCE
 BEARINGS AS SHOWN HEREON ARE GRID DATUM,
 NAD 83 (90 ADJUSTMENT), FLORIDA EAST ZONE.

LEGEND/ABBREVIATIONS
 C - CENTERLINE
 Δ - DELTA (CENTRAL ANGLE)
 CB - CHORD BEARING
 CD - CHORD DISTANCE
 DE - DRAINAGE EASEMENT
 E - EASTING (WHEN USED WITH COORDINATES)
 L - ARC LENGTH
 LB - LICENSED BUSINESS
 L.W.D.D. - LAKE WORTH DRAINAGE DISTRICT
 N - NORTHING (WHEN USED WITH COORDINATES)
 MOHE - MAINTENANCE AND OVERHANG EASEMENT
 O.R.B. - OFFICIAL RECORD BOOK
 PC - POINT OF CURVATURE
 PRAS - PRIVATE RESIDENTIAL ACCESS STREET
 PNT - POINT OF NON TANGENCY
 PT - POINT OF TANGENCY
 PBCUE - PALM BEACH COUNTY UTILITY EASEMENT
 PUD - PLANNED UNIT DEVELOPMENT
 (P2) - FIELDS AT GULFSTREAM POLO PUD - PLAT TWO
 (PLAT BOOK 125, PAGES 130-137)
 (P3) - FIELDS AT GULFSTREAM POLO PUD - PLAT THREE
 (PLAT BOOK 127, PAGES 162-176)
 (P4) - FIELDS AT GULFSTREAM POLO PUD - PLAT FOUR
 (PLAT BOOK 128, PAGES 154-162)
 R - RADIUS
 UE - UTILITY EASEMENT
 ◀ - INDICATES "ZERO" SIDE OF LOT LINE
 ■ PRM - DENOTES SET PERMANENT REFERENCE MONUMENT
 4" x 4" x 24" CONCRETE MONUMENT WITH
 ALUMINUM DISK STAMPED "C&W PRM LB3591"
 ● SIRC - DENOTES SET 5/8" IRON ROD WITH CAP
 STAMPED "C&W PRM LB3591"